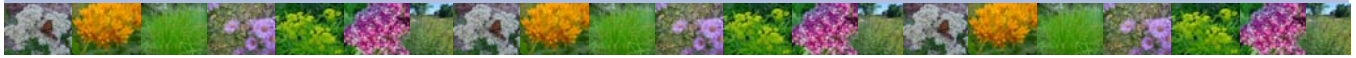


PROJECT PROFILE

# HERRALA AND RUSIN

River Bank  
Stabilization



## Pre-Stabilization Conditions

The shoreline along the Herrala and Rusin properties consisted of a 5-20 foot high bank with minor erosion and bank undercutting. Previous attempts to stabilize the bank utilized rock along the water line. For this project, a cedar tree revetment was installed along the waterline to minimize the impact of wave action and help trap sediment. The project had many benefits including:

- Improved fish and wildlife habitat
- Repair bank undercutting and erosion
- Providing a long-term cost-effective solution to counter the high-risk of future problems

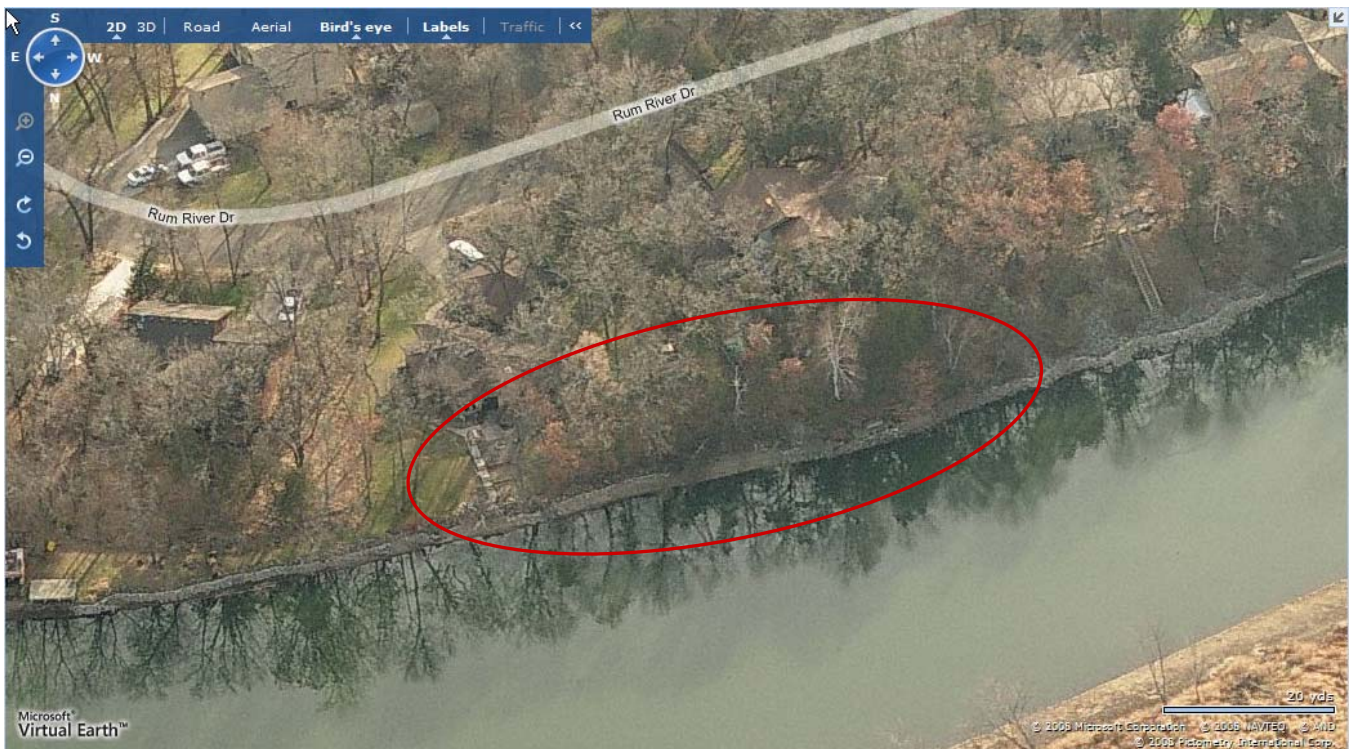
## PROJECT SPECS

Installed ..... October 2008

Project Length ..... 158 ft

Labor Utilized..... Minnesota Conservation Corps

Cost-share Funding Provided .....50% of total project costs





## Before Installation



May 2006



This site had minor erosion and bank undercutting. Homeowners previously attempted to stabilize the shoreline with rock. The length of shoreline needing attention was approximately 158 ft.

## Installation



October 2008



Two rows of cedar trees were anchored along the normal waterline to repair erosion and undercutting as well as prevent more serious problems in the future. Installation occurred during low water.